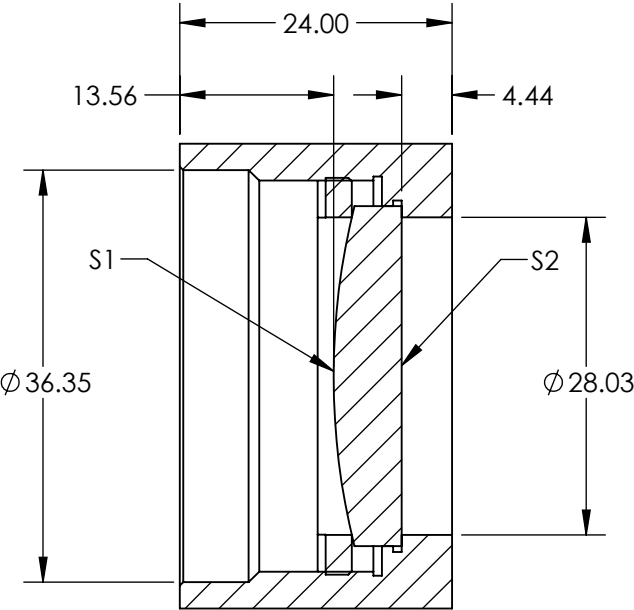
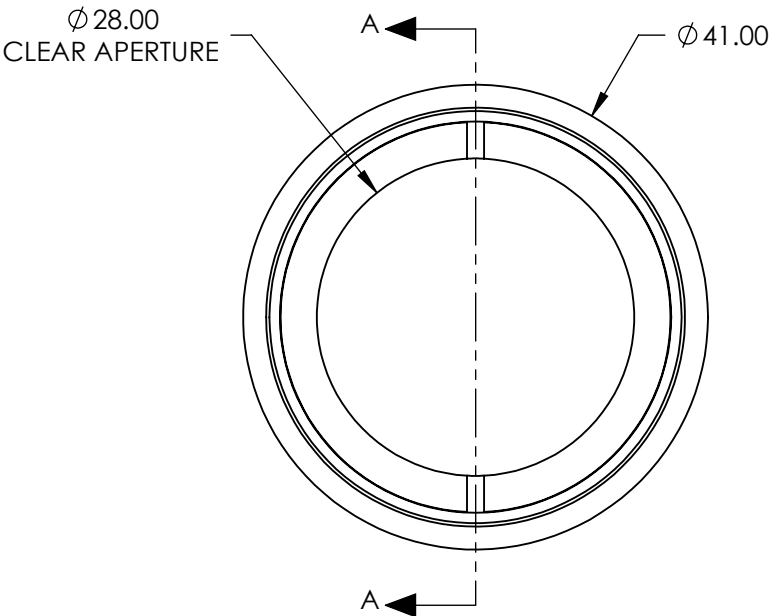



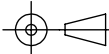
- NOTES:
- 1. MATERIAL: N-BK7 MOUNTED IN BLACK ANODIZED ALUMINUM
 - 2. COATING (APPLY ACROSS COATING APERTURE):
S1& S2: YAG-BBAR
R(ABS) < 0.25% 532nm @ 0° AOI
R(ABS) < 0.25% 1064nm @ 0° AOI
R(AVG) < 1.0% FROM 500 - 1100nm @ 0° AOI
 - 3. RoHS: COMPLIANT

**FOR INFORMATION ONLY:
DO NOT MANUFACTURE
PARTS TO THIS DRAWING**



SECTION A-A

SPECIFICATIONS SUBJECT TO CHANGE WITHOUT NOTICE
DIMENSIONS ARE FOR REFERENCE ONLY

			EFL: 120.00mm		 Edmund Optics®		
			BFL: 116.04mm				
SHAPE	S1 CONVEX	S2 PLANO	<div>THIRD ANGLE PROJECTION</div> 		TITLE	120mm FL LASER FOCUSING SINGLET	
RADIUS	62.02	INFINITY			DWG NO	12321	SHEET 1 OF 1
SURFACE QUALITY	40-20	40-20					
BEVEL MAX FACE	PROTECTIVE AS NEEDED	PROTECTIVE AS NEEDED	ALL DIMS IN	mm			