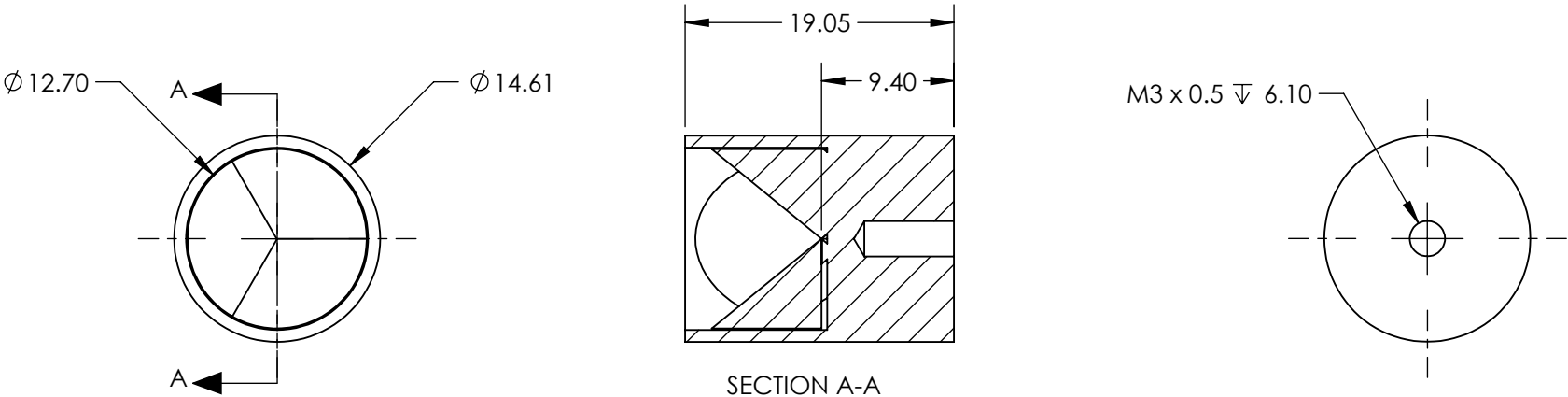


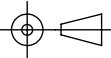
NOTES:
1. RoHS: COMPLIANT



SPECIFICATIONS SUBJECT TO CHANGE WITHOUT NOTICE
DIMENSIONS ARE FOR REFERENCE ONLY

**FOR INFORMATION ONLY:
DO NOT MANUFACTURE
PARTS TO THIS DRAWING**

EO[®] Edmund Optics[®]

THIRD ANGLE PROJECTION 		TITLE	12.7mm Clear Aperture, 5 Arcsec, Aluminum Retroreflector	
ALL DIMS IN	mm	DWG NO	46170	SHEET 1 OF 1