

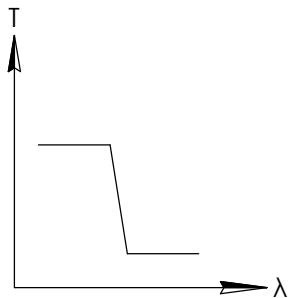
**FOR INFORMATION ONLY:  
DO NOT MANUFACTURE  
PARTS TO THIS DRAWING**

NOTES:

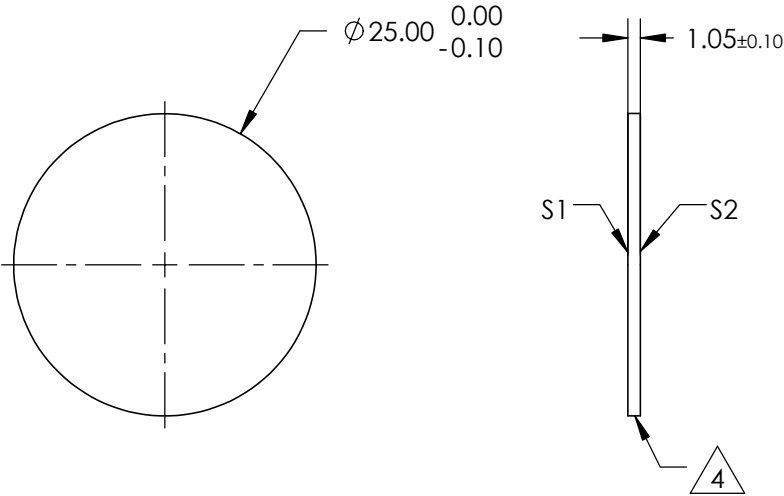
- 1. SUBSTRATE
- 2. SURFACE S2 TO BE PARALLEL WITH SURFACE S1 TO WITHIN 5 arcsec
- 3. COATING (APPLY ACROSS COATING APERTURE)  
ENVIRONMENTAL DURABILITY:  
PHYSICAL DURABILITY:  
PERFORMANCE SPECIFICATIONS:  
T(avg): >85% FROM 400 - 775nm FOR RANDOM POLARIZATION @ 45° AOI  
T(abs): >80% FROM 400 - 775nm FOR ALL POLARIZATIONS @ 45° AOI  
R(avg): >97% FROM 850 - 1050nm FOR RANDOM POLARIZATION @ 45° AOI  
R(abs): >95% FROM 850 - 1050nm FOR ALL POLARIZATIONS @ 45° AOI  
T(abs): = 50% 800nm @ 45° AOI
- S1: HARD COATED  
S2: SINGLE LAYER MgF2

4. FINE GRIND SURFACE

- 5. POWER, IRREGULARITY, AND SURFACE QUALITY SPECIFICATIONS  
APPLY ACROSS CLEAR APERTURE
- 6. TRANSMITTED WAVEFRONT DISTORTION RMS@ 632.8nm  $\leq \frac{1}{4} \lambda$
- 7. ROHS COMPLIANT



SHORTPASS FILTER



SPECIFICATIONS SUBJECT TO CHANGE WITHOUT NOTICE  
DIMENSIONS ARE FOR REFERENCE ONLY

	S1	S2
SHAPE	PLANO	PLANO
SURFACE QUALITY	40-20	40-20
CLEAR APERTURE	Ø22.00	Ø22.00
COATING APERTURE	Ø24.00	Ø24.00
BEVEL	PROTECTIVE AS NEEDED	PROTECTIVE AS NEEDED

THIRD ANGLE PROJECTION		Edmund Optics®	
ALL DIMS IN mm		TITLE	Ø25mm, 800nm DICHROIC SHORTPASS FILTER
DWG NO		69208	SHEET 1 OF 1

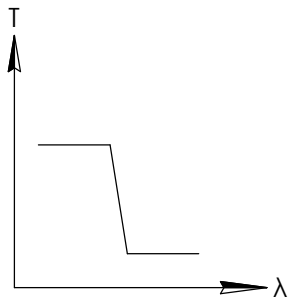
**FOR INFORMATION ONLY:  
DO NOT MANUFACTURE  
PARTS TO THIS DRAWING**

NOTES:

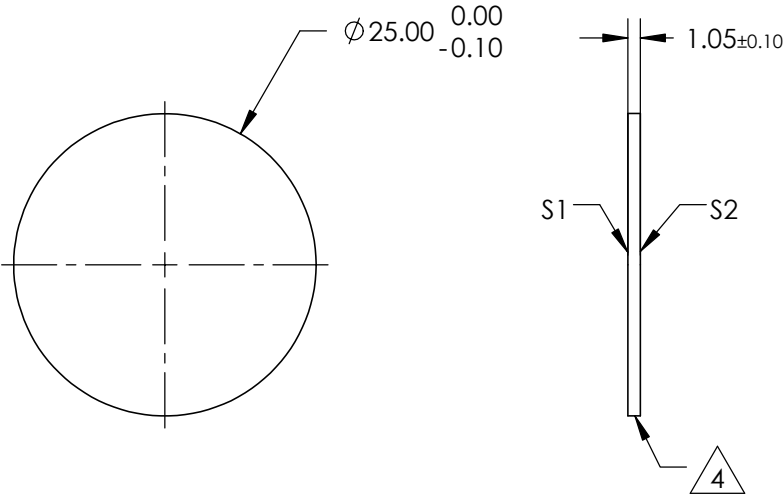
- 1. SUBSTRATE
- 2. SURFACE S2 TO BE PARALLEL WITH SURFACE S1 TO WITHIN 5 arcsec
- 3. COATING (APPLY ACROSS COATING APERTURE)  
ENVIRONMENTAL DURABILITY:  
PHYSICAL DURABILITY:  
PERFORMANCE SPECIFICATIONS:  
T(avg): >85% FROM 400 - 820nm FOR RANDOM POLARIZATION @ 45° AOI  
T(abs): >80% FROM 400 - 820nm FOR ALL POLARIZATIONS @ 45° AOI  
R(avg): >97% FROM 910 - 1110nm FOR RANDOM POLARIZATION @ 45° AOI  
R(abs): >95% FROM 910 - 1110nm FOR ALL POLARIZATIONS @ 45° AOI  
T(abs): = 50% 850nm @ 45° AOI
- S1: HARD COATED  
S2: SINGLE LAYER MgF2

4. FINE GRIND SURFACE

- 5. POWER, IRREGULARITY, AND SURFACE QUALITY SPECIFICATIONS  
APPLY ACROSS CLEAR APERTURE
- 6. TRANSMITTED WAVEFRONT DISTORTION RMS@ 632.8nm  $\leq \frac{1}{4} \lambda$
- 7. ROHS COMPLIANT



SHORTPASS FILTER



SPECIFICATIONS SUBJECT TO CHANGE WITHOUT NOTICE  
DIMENSIONS ARE FOR REFERENCE ONLY

	S1	S2
SHAPE	PLANO	PLANO
SURFACE QUALITY	40-20	40-20
CLEAR APERTURE	Ø22.00	Ø22.00
COATING APERTURE	Ø24.00	Ø24.00
BEVEL	PROTECTIVE AS NEEDED	PROTECTIVE AS NEEDED

THIRD ANGLE PROJECTION		Edmund Optics®	
TITLE		Ø25mm, 850nm DICHROIC SHORTPASS FILTER	
ALL DIMS IN	mm	DWG NO	69209
			SHEET 1 OF 1

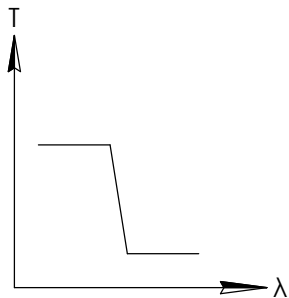
**FOR INFORMATION ONLY:  
DO NOT MANUFACTURE  
PARTS TO THIS DRAWING**

NOTES:

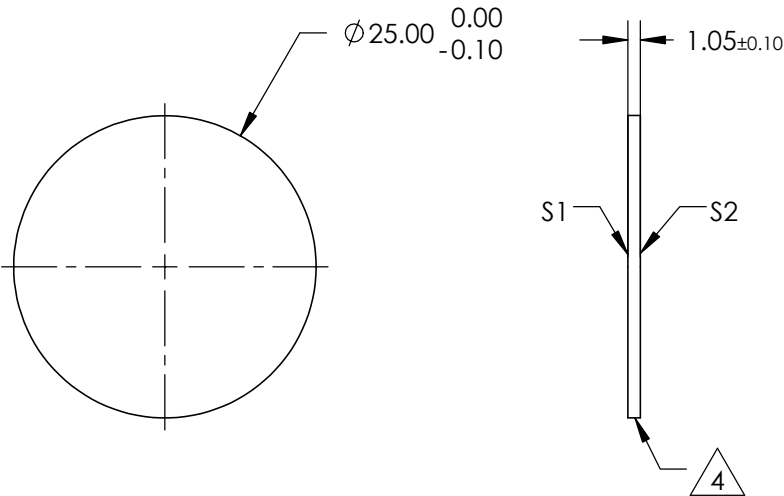
- SUBSTRATE
  - SURFACE S2 TO BE PARALLEL WITH SURFACE S1 TO WITHIN 5 arcsec
  - COATING (APPLY ACROSS COATING APERTURE)  
ENVIRONMENTAL DURABILITY:  
PHYSICAL DURABILITY:  
PERFORMANCE SPECIFICATIONS:  
T(avg): >85% FROM 465 - 865nm FOR RANDOM POLARIZATION @ 45° AOI  
T(abs): >80% FROM 465 - 865nm FOR ALL POLARIZATIONS @ 45° AOI  
R(avg): >97% FROM 960 - 1170nm FOR RANDOM POLARIZATION @ 45° AOI  
R(abs): >95% FROM 960 - 1170nm FOR ALL POLARIZATIONS @ 45° AOI  
T(abs): = 50% 900nm @ 45° AOI
- S1: HARD COATED  
S2: SINGLE LAYER MgF2

4. FINE GRIND SURFACE

- POWER, IRREGULARITY, AND SURFACE QUALITY SPECIFICATIONS  
APPLY ACROSS CLEAR APERTURE
- TRANSMITTED WAVEFRONT DISTORTION RMS@ 632.8nm  $\leq \frac{1}{4} \lambda$
- ROHS COMPLIANT



SHORTPASS FILTER



SPECIFICATIONS SUBJECT TO CHANGE WITHOUT NOTICE  
DIMENSIONS ARE FOR REFERENCE ONLY

	S1	S2
SHAPE	PLANO	PLANO
SURFACE QUALITY	40-20	40-20
CLEAR APERTURE	Ø22.00	Ø22.00
COATING APERTURE	Ø24.00	Ø24.00
BEVEL	PROTECTIVE AS NEEDED	PROTECTIVE AS NEEDED

THIRD ANGLE PROJECTION		Edmund Optics®	
TITLE		Ø25mm, 900nm DICHROIC SHORTPASS FILTER	
ALL DIMS IN	mm	DWG NO	69210
			SHEET 1 OF 1

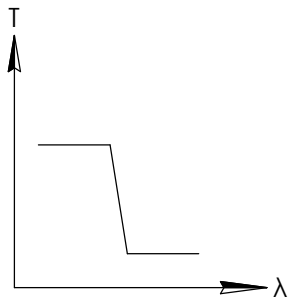
**FOR INFORMATION ONLY:  
DO NOT MANUFACTURE  
PARTS TO THIS DRAWING**

NOTES:

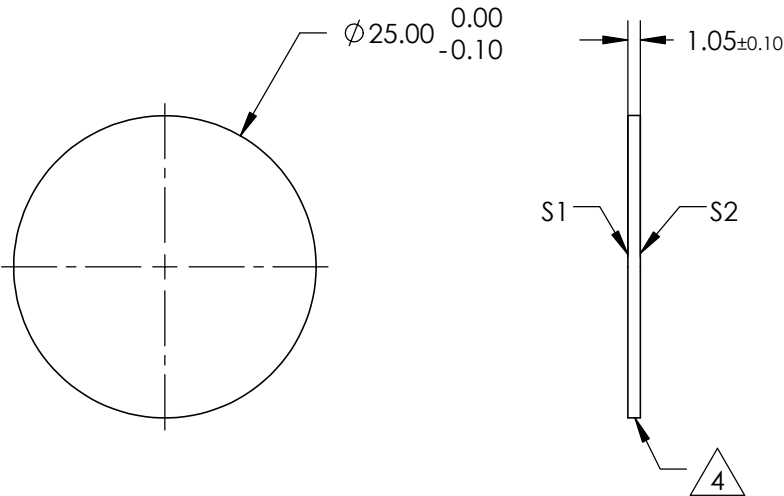
- SUBSTRATE
  - SURFACE S2 TO BE PARALLEL WITH SURFACE S1 TO WITHIN 5 arcsec
  - COATING (APPLY ACROSS COATING APERTURE)  
ENVIRONMENTAL DURABILITY:  
PHYSICAL DURABILITY:  
PERFORMANCE SPECIFICATIONS:  
T(avg): >85% FROM 495 - 912nm FOR RANDOM POLARIZATION @ 45° AOI  
T(abs): >80% FROM 495 - 912nm FOR ALL POLARIZATIONS @ 45° AOI  
R(avg): >97% FROM 997 - 1235nm FOR RANDOM POLARIZATION @ 45° AOI  
R(abs): >95% FROM 997 - 1235nm FOR ALL POLARIZATIONS @ 45° AOI  
T(abs): = 50% 950nm @ 45° AOI
- S1: HARD COATED  
S2: SINGLE LAYER MgF2

4. FINE GRIND SURFACE

- POWER, IRREGULARITY, AND SURFACE QUALITY SPECIFICATIONS  
APPLY ACROSS CLEAR APERTURE
- TRANSMITTED WAVEFRONT DISTORTION RMS@ 632.8nm  $\leq \frac{1}{4} \lambda$
- ROHS COMPLIANT



SHORTPASS FILTER



SPECIFICATIONS SUBJECT TO CHANGE WITHOUT NOTICE  
DIMENSIONS ARE FOR REFERENCE ONLY

	S1	S2
SHAPE	PLANO	PLANO
SURFACE QUALITY	40-20	40-20
CLEAR APERTURE	Ø22.00	Ø22.00
COATING APERTURE	Ø24.00	Ø24.00
BEVEL	PROTECTIVE AS NEEDED	PROTECTIVE AS NEEDED

THIRD ANGLE PROJECTION		Edmund Optics®	
TITLE		Ø25mm, 950nm DICHROIC SHORTPASS FILTER	
ALL DIMS IN	mm	DWG NO	86688
			SHEET 1 OF 1

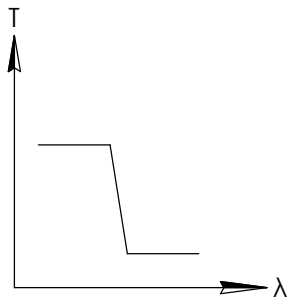
**FOR INFORMATION ONLY:  
DO NOT MANUFACTURE  
PARTS TO THIS DRAWING**

NOTES:

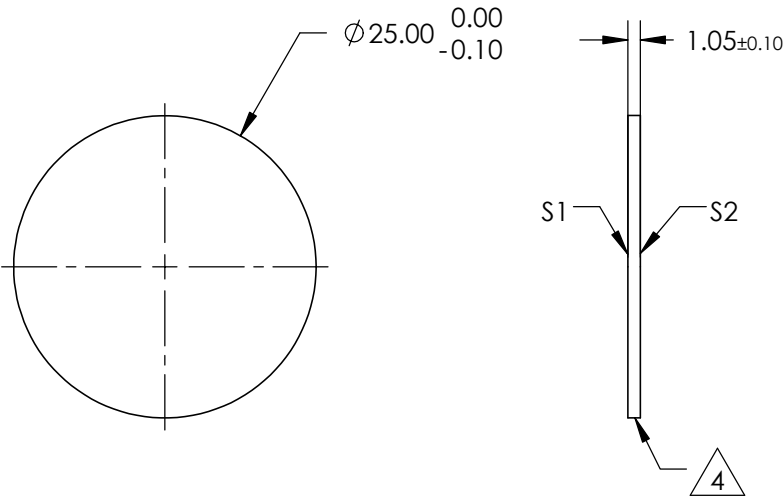
- SUBSTRATE
  - SURFACE S2 TO BE PARALLEL WITH SURFACE S1 TO WITHIN 5 arcsec
  - COATING (APPLY ACROSS COATING APERTURE)  
ENVIRONMENTAL DURABILITY:  
PHYSICAL DURABILITY:  
PERFORMANCE SPECIFICATIONS:  
T(avg): >85% FROM 520 - 960nm FOR RANDOM POLARIZATION @ 45° AOI  
T(abs): >80% FROM 520 - 960nm FOR ALL POLARIZATIONS @ 45° AOI  
R(avg): >97% FROM 1050 - 1300nm FOR RANDOM POLARIZATION @ 45° AOI  
R(abs): >95% FROM 1050 - 1300nm FOR ALL POLARIZATIONS @ 45° AOI  
T(abs): = 50% 1000nm @ 45° AOI
- S1: HARD COATED  
S2: SINGLE LAYER MgF2

4. FINE GRIND SURFACE

- POWER, IRREGULARITY, AND SURFACE QUALITY SPECIFICATIONS  
APPLY ACROSS CLEAR APERTURE
- TRANSMITTED WAVEFRONT DISTORTION RMS@ 632.8nm  $\leq \frac{1}{4} \lambda$
- ROHS COMPLIANT



SHORTPASS FILTER



SPECIFICATIONS SUBJECT TO CHANGE WITHOUT NOTICE  
DIMENSIONS ARE FOR REFERENCE ONLY

	S1	S2
SHAPE	PLANO	PLANO
SURFACE QUALITY	40-20	40-20
CLEAR APERTURE	Ø22.00	Ø22.00
COATING APERTURE	Ø24.00	Ø24.00
BEVEL	PROTECTIVE AS NEEDED	PROTECTIVE AS NEEDED

THIRD ANGLE PROJECTION		Edmund Optics®	
TITLE		Ø25mm, 1000nm DICHROIC SHORTPASS FILTER	
ALL DIMS IN	mm	DWG NO	86689
			SHEET 1 OF 1

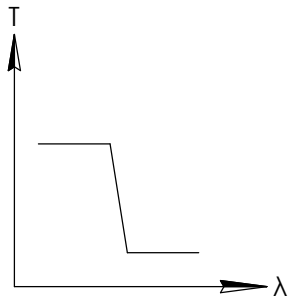
FOR INFORMATION ONLY:  
DO NOT MANUFACTURE  
PARTS TO THIS DRAWING

NOTES:

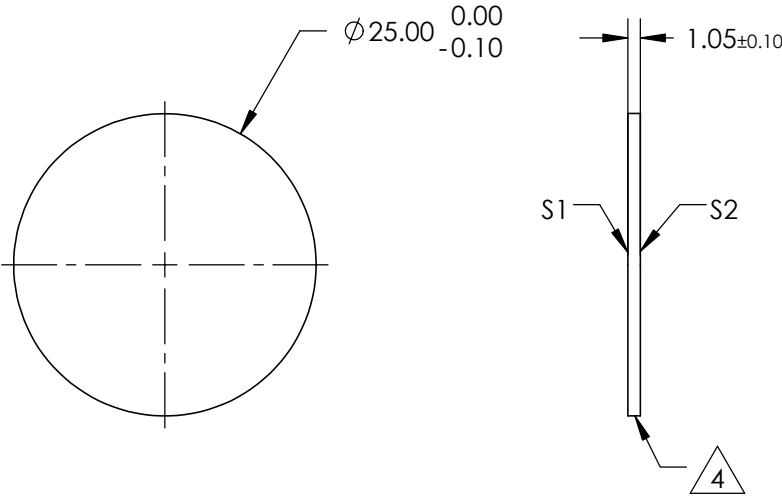
- SUBSTRATE
  - SURFACE S2 TO BE PARALLEL WITH SURFACE S1 TO WITHIN 5 arcsec
  - COATING (APPLY ACROSS COATING APERTURE)  
ENVIRONMENTAL DURABILITY:  
PHYSICAL DURABILITY:  
PERFORMANCE SPECIFICATIONS:  
T(avg): >85% FROM 546 - 1008nm FOR RANDOM POLARIZATION @ 45° AOI  
T(abs): >80% FROM 546 - 1008nm FOR ALL POLARIZATIONS @ 45° AOI  
R(avg): >97% FROM 1102 - 1365nm FOR RANDOM POLARIZATION @ 45° AOI  
R(abs): >95% FROM 1102 - 1365nm FOR ALL POLARIZATIONS @ 45° AOI  
T(abs): = 50% 1050nm @ 45° AOI
- S1: HARD COATED  
S2: SINGLE LAYER MgF2

4. FINE GRIND SURFACE

- POWER, IRREGULARITY, AND SURFACE QUALITY SPECIFICATIONS  
APPLY ACROSS CLEAR APERTURE
- TRANSMITTED WAVEFRONT DISTORTION RMS@ 632.8nm  $\leq \frac{1}{4} \lambda$
- ROHS COMPLIANT



SHORTPASS FILTER



SPECIFICATIONS SUBJECT TO CHANGE WITHOUT NOTICE  
DIMENSIONS ARE FOR REFERENCE ONLY

	S1	S2
SHAPE	PLANO	PLANO
SURFACE QUALITY	40-20	40-20
CLEAR APERTURE	Ø22.00	Ø22.00
COATING APERTURE	Ø24.00	Ø24.00
BEVEL	PROTECTIVE AS NEEDED	PROTECTIVE AS NEEDED

THIRD ANGLE PROJECTION			
TITLE		Ø25mm, 1050nm DICHROIC SHORTPASS FILTER	
ALL DIMS IN	mm	DWG NO	86690
			SHEET 1 OF 1

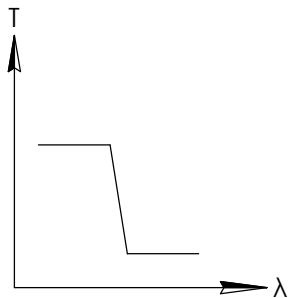
**FOR INFORMATION ONLY:  
DO NOT MANUFACTURE  
PARTS TO THIS DRAWING**

NOTES:

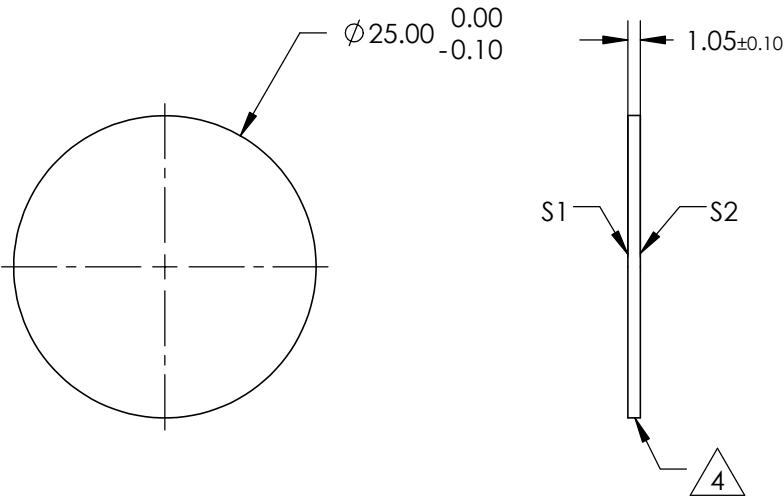
- SUBSTRATE
  - SURFACE S2 TO BE PARALLEL WITH SURFACE S1 TO WITHIN 5 arcsec
  - COATING (APPLY ACROSS COATING APERTURE)  
ENVIRONMENTAL DURABILITY:  
PHYSICAL DURABILITY:  
PERFORMANCE SPECIFICATIONS:  
T(avg): >85% FROM 572 - 1056nm FOR RANDOM POLARIZATION @ 45° AOI  
T(abs): >80% FROM 572 - 1056nm FOR ALL POLARIZATIONS @ 45° AOI  
R(avg): >97% FROM 1155 - 1430nm FOR RANDOM POLARIZATION @ 45° AOI  
R(abs): >95% FROM 1155 - 1430nm FOR ALL POLARIZATIONS @ 45° AOI  
T(abs): = 50% 1100nm @ 45° AOI
- S1: HARD COATED  
S2: SINGLE LAYER MgF2

4. FINE GRIND SURFACE

- POWER, IRREGULARITY, AND SURFACE QUALITY SPECIFICATIONS  
APPLY ACROSS CLEAR APERTURE
- TRANSMITTED WAVEFRONT DISTORTION RMS@ 632.8nm  $\leq \frac{1}{4} \lambda$
- ROHS COMPLIANT



SHORTPASS FILTER



SPECIFICATIONS SUBJECT TO CHANGE WITHOUT NOTICE  
DIMENSIONS ARE FOR REFERENCE ONLY

	S1	S2
SHAPE	PLANO	PLANO
SURFACE QUALITY	40-20	40-20
CLEAR APERTURE	Ø22.00	Ø22.00
COATING APERTURE	Ø24.00	Ø24.00
BEVEL	PROTECTIVE AS NEEDED	PROTECTIVE AS NEEDED

THIRD ANGLE PROJECTION		Edmund Optics®	
ALL DIMS IN mm		TITLE	Ø25mm, 1100nm DICHROIC SHORTPASS FILTER
DWG NO		86691	SHEET 1 OF 1

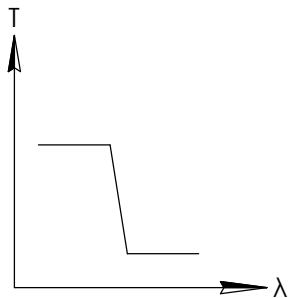
**FOR INFORMATION ONLY:  
DO NOT MANUFACTURE  
PARTS TO THIS DRAWING**

NOTES:

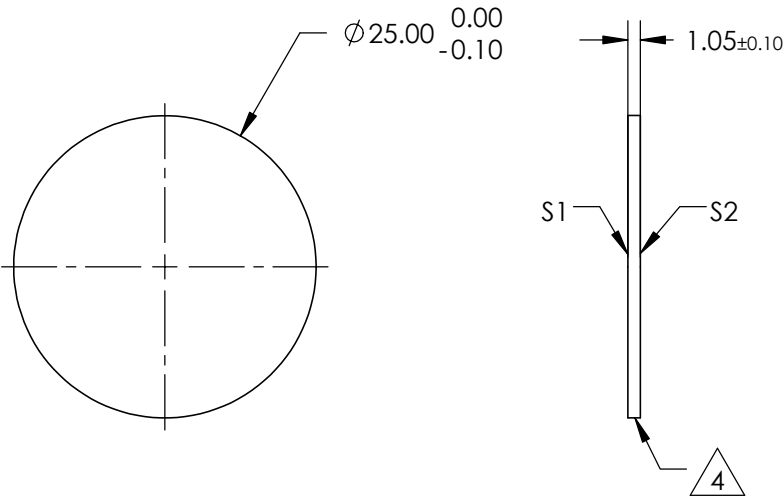
- SUBSTRATE
  - SURFACE S2 TO BE PARALLEL WITH SURFACE S1 TO WITHIN 5 arcsec
  - COATING (APPLY ACROSS COATING APERTURE)  
ENVIRONMENTAL DURABILITY:  
PHYSICAL DURABILITY:  
PERFORMANCE SPECIFICATIONS:  
T(avg): >85% FROM 598 - 1104nm FOR RANDOM POLARIZATION @ 45° AOI  
T(abs): >80% FROM 598 - 1104nm FOR ALL POLARIZATIONS @ 45° AOI  
R(avg): >97% FROM 1207 - 1495nm FOR RANDOM POLARIZATION @ 45° AOI  
R(abs): >95% FROM 1207 - 1495nm FOR ALL POLARIZATIONS @ 45° AOI  
T(abs): = 50% 1150nm @ 45° AOI
- S1: HARD COATED  
S2: SINGLE LAYER MgF2

4. FINE GRIND SURFACE

- POWER, IRREGULARITY, AND SURFACE QUALITY SPECIFICATIONS  
APPLY ACROSS CLEAR APERTURE
- TRANSMITTED WAVEFRONT DISTORTION RMS@ 632.8nm  $\leq \frac{1}{4} \lambda$
- ROHS COMPLIANT



SHORTPASS FILTER



SPECIFICATIONS SUBJECT TO CHANGE WITHOUT NOTICE  
DIMENSIONS ARE FOR REFERENCE ONLY

	S1	S2
SHAPE	PLANO	PLANO
SURFACE QUALITY	40-20	40-20
CLEAR APERTURE	Ø22.00	Ø22.00
COATING APERTURE	Ø24.00	Ø24.00
BEVEL	PROTECTIVE AS NEEDED	PROTECTIVE AS NEEDED

THIRD ANGLE PROJECTION		Edmund Optics®	
ALL DIMS IN		TITLE	Ø25mm, 1150nm DICHROIC SHORTPASS FILTER
mm		DWG NO	86692
			SHEET 1 OF 1



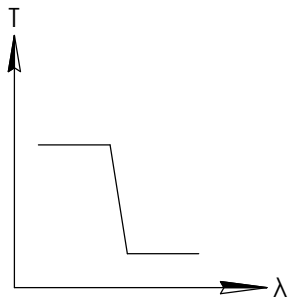
**FOR INFORMATION ONLY:  
DO NOT MANUFACTURE  
PARTS TO THIS DRAWING**

NOTES:

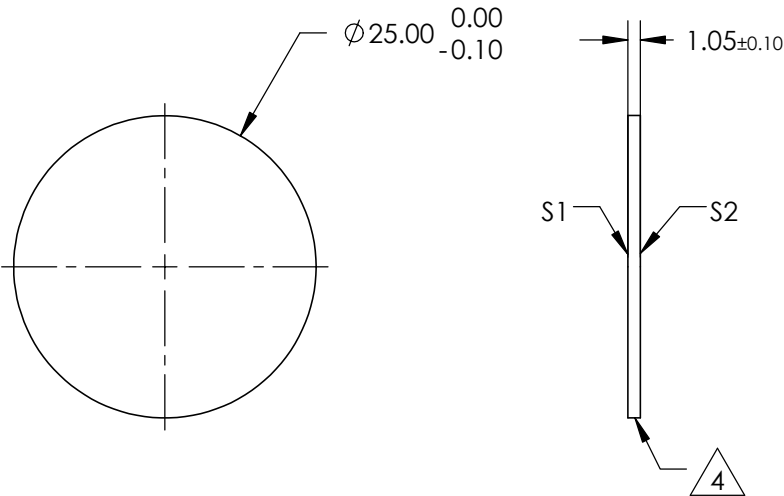
1. SUBSTRATE
  2. SURFACE S2 TO BE PARALLEL WITH SURFACE S1 TO WITHIN 5 arcsec
  3. COATING (APPLY ACROSS COATING APERTURE)  
ENVIRONMENTAL DURABILITY:  
PHYSICAL DURABILITY:  
PERFORMANCE SPECIFICATIONS:  
T(avg): >85% FROM 624 - 1152nm FOR RANDOM POLARIZATION @ 45° AOI  
T(abs): >80% FROM 624 - 1152nm FOR ALL POLARIZATIONS @ 45° AOI  
R(avg): >97% FROM 1260 - 1560nm FOR RANDOM POLARIZATION @ 45° AOI  
R(abs): >95% FROM 1260 - 1560nm FOR ALL POLARIZATIONS @ 45° AOI  
T(abs): = 50% 1200nm @ 45° AOI
- S1: HARD COATED  
S2: SINGLE LAYER MgF2

4. FINE GRIND SURFACE

5. POWER, IRREGULARITY, AND SURFACE QUALITY SPECIFICATIONS  
APPLY ACROSS CLEAR APERTURE
6. TRANSMITTED WAVEFRONT DISTORTION RMS@ 632.8nm  $\leq \frac{1}{4} \lambda$
7. ROHS COMPLIANT

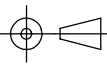



SHORTPASS FILTER



SPECIFICATIONS SUBJECT TO CHANGE WITHOUT NOTICE  
DIMENSIONS ARE FOR REFERENCE ONLY

	S1	S2
SHAPE	PLANO	PLANO
SURFACE QUALITY	40-20	40-20
CLEAR APERTURE	Ø22.00	Ø22.00
COATING APERTURE	Ø24.00	Ø24.00
BEVEL	PROTECTIVE AS NEEDED	PROTECTIVE AS NEEDED

THIRD ANGLE PROJECTION 			
TITLE		Ø25mm, 1200nm DICHROIC SHORTPASS FILTER	
ALL DIMS IN	mm	DWG NO	86693
			SHEET 1 OF 1