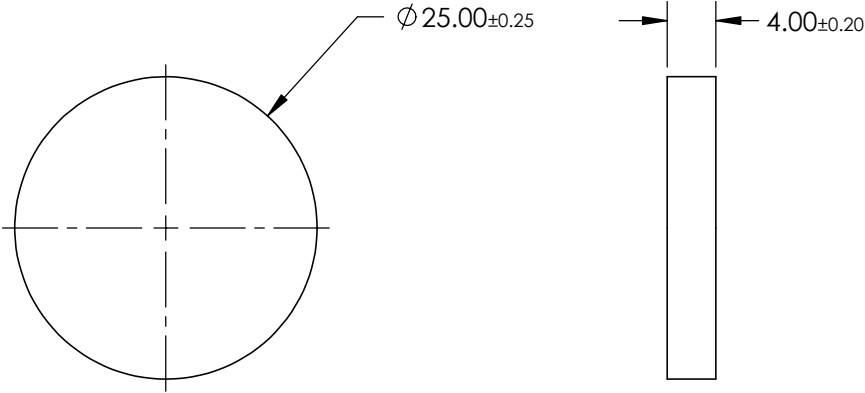
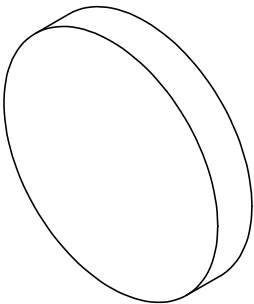


- NOTES:
- 1. SUBSTRATE:
  - 2. SURFACE S2 TO BE PARALLEL WITH S1 TO WITHIN <1 ARCMIN
  - 3. COATING (APPLY ACROSS CLEAR APERTURE)  
PERFORMANCE SPECIFICATIONS:  
R{ABS} = 50% @ 615nm; R{AVG} > 98% @ 640-750nm  
S1: MULTI-LAYER DICHROIC  
S2: SINGLE LAYER MgF2
  - 4. FINE GRIND SURFACE
  - 5. POWER, IRREGULARITY, AND SURFACE QUALITY  
SPECIFICATIONS APPLY ACROSS CLEAR APERTURE
  - 6. ROHS COMPLIANT

FOR INFORMATION ONLY:  
DO NOT MANUFACTURE  
PARTS TO THIS DRAWING



SPECIFICATIONS SUBJECT TO CHANGE WITHOUT NOTICE  
DIMENSIONS ARE FOR REFERENCE ONLY

	S1	S2
SHAPE	PLANO	PLANO
CUT-ON WAVELENGTH	615nm	615nm
SURFACE QUALITY	60-40	60-40
SURFACE FLATNESS	$\lambda/4$	$\lambda/4$
COATING TYPE	TRADITIONAL COATED	TRADITIONAL COATED
BEVEL	PROTECTED AS NEEDED	PROTECTED AS NEEDED

THIRD ANGLE  
PROJECTION

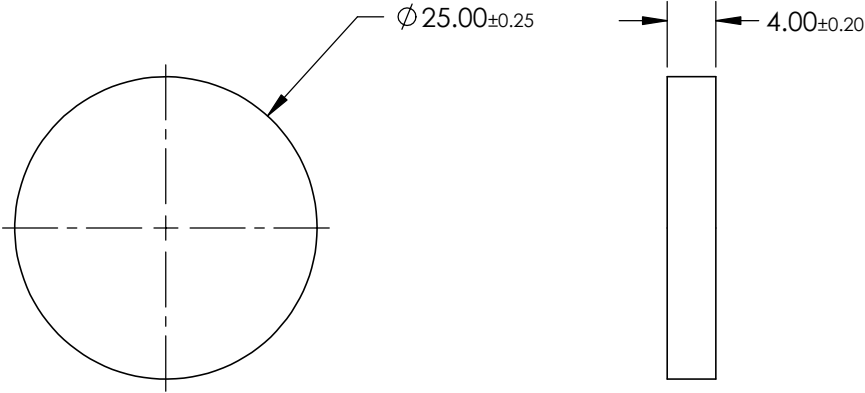
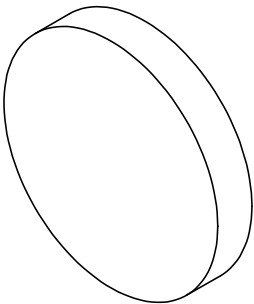
ALL DIMS IN mm

 **Edmund Optics®**

TITLE	Ø25mm, 45° RED DICHROIC FILTER	
DWG NO	47266	SHEET 1 OF 1

- NOTES:
- 1. SUBSTRATE:
  - 2. SURFACE S2 TO BE PARALLEL WITH S1 TO WITHIN <1 ARCMIN
  - 3. COATING (APPLY ACROSS CLEAR APERTURE)  
PERFORMANCE SPECIFICATIONS:  
R(ABS) = 50% @ 510nm; R(AVG) > 98% @ 400 - 475nm  
S1: MULTI-LAYER DICHROIC  
S2: SINGLE LAYER MgF2
  - 4. FINE GRIND SURFACE
  - 5. POWER, IRREGULARITY, AND SURFACE QUALITY  
SPECIFICATIONS APPLY ACROSS CLEAR APERTURE
  - 6. ROHS COMPLIANT

FOR INFORMATION ONLY:  
DO NOT MANUFACTURE  
PARTS TO THIS DRAWING



SPECIFICATIONS SUBJECT TO CHANGE WITHOUT NOTICE  
DIMENSIONS ARE FOR REFERENCE ONLY

	S1	S2
SHAPE	PLANO	PLANO
CUT-OFF WAVELENGTH	510nm	510nm
SURFACE QUALITY	60-40	60-40
SURFACE FLATNESS	$\lambda/4$	$\lambda/4$
COATING TYPE	TRADITIONAL COATED	TRADITIONAL COATED
BEVEL	PROTECTED AS NEEDED	PROTECTED AS NEEDED

THIRD ANGLE  
PROJECTION

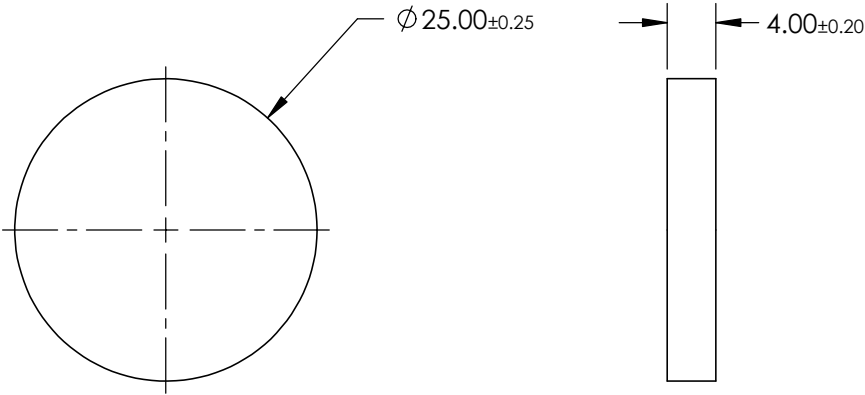
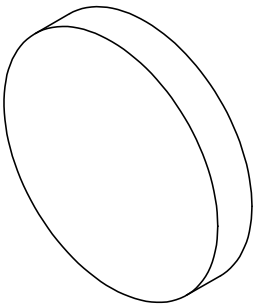
ALL DIMS IN      mm

 **Edmund Optics®**

TITLE	Ø25mm, 45° BLUE DICHROIC FILTER		
DWG NO	47267	SHEET 1 OF 1	

- NOTES:
- 1. SUBSTRATE:
  - 2. SURFACE S2 TO BE PARALLEL WITH S1 TO WITHIN <1 ARCMIN
  - 3. COATING (APPLY ACROSS CLEAR APERTURE)  
PERFORMANCE SPECIFICATIONS:  
R(ABS) = 99.7% @ 535nm; R(AVG) >95% FROM 520-555nm  
S1: MULTI-LAYER DICHROIC  
S2: SINGLE LAYER MgF2
  - 4. FINE GRIND SURFACE
  - 5. POWER, IRREGULARITY, AND SURFACE QUALITY  
SPECIFICATIONS APPLY ACROSS CLEAR APERTURE
  - 6. ROHS COMPLIANT

FOR INFORMATION ONLY:  
DO NOT MANUFACTURE  
PARTS TO THIS DRAWING



SPECIFICATIONS SUBJECT TO CHANGE WITHOUT NOTICE  
DIMENSIONS ARE FOR REFERENCE ONLY

	S1	S2
SHAPE	PLANO	PLANO
CENTER WAVELENGTH CWL	535nm	535nm
SURFACE QUALITY	60-40	60-40
SURFACE FLATNESS	$\lambda/4$	$\lambda/4$
COATING TYPE	TRADITIONAL COATED	TRADITIONAL COATED
BEVEL	PROTECTED AS NEEDED	PROTECTED AS NEEDED

THIRD ANGLE  
PROJECTION

ALL DIMS IN mm

 Edmund Optics®

TITLE	Ø25mm, 45° GREEN DICHROIC FILTER	
DWG NO	47268	SHEET 1 OF 1