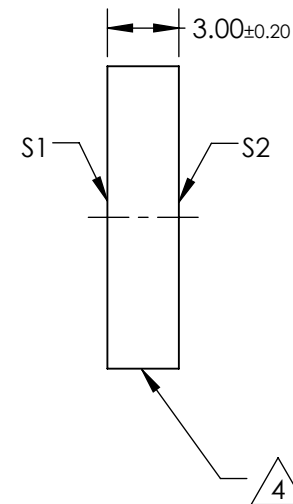
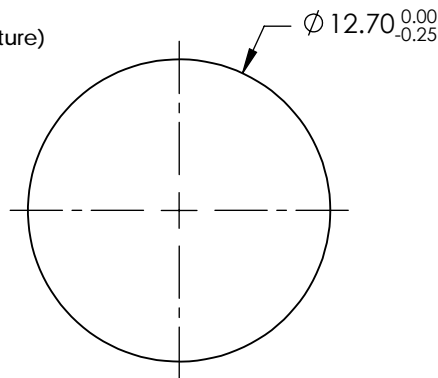
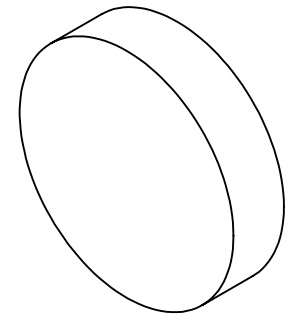


NOTES:

- 1. SUBSTRATE: N-BK7
- 2. S2 TO BE PARALLEL WITH S1 TO < 1ARCMIN
- 3. COATING (APPLY ACROSS CLEAR APERTURE)
S1 & S2: R(ABS) < 0.25% @ 532nm @ 0° AOI
R(ABS) < 0.25% @ 1064nm @ 0° AOI
R(AVG) < 1.0% FROM 500-1100nm @ 0° AOI
- 4. FINE GRIND SURFACE
- 5. RoHS COMPLIANT
- 6. SURFACE FLATNESS (P-V): $\lambda/4$ (per inch over clear aperture)




**FOR INFORMATION ONLY:
DO NOT MANUFACTURE
PARTS TO THIS DRAWING**

SPECIFICATIONS SUBJECT TO CHANGE WITHOUT NOTICE
DIMENSIONS ARE FOR REFERENCE ONLY

	S1	S2
SHAPE	PLANO	PLANO
SURFACE QUALITY	60-40	60-40
CLEAR APERTURE (mm)	Ø11.43	Ø11.43
BEVEL	PROTECTIVE AS NEEDED	PROTECTIVE AS NEEDED

THIRD ANGLE
PROJECTION

ALL DIMS IN mm

 **Edmund Optics®**

TITLE	12.7mm DIA., 3mm THICK, YAG-BBAR COATED $\lambda/4$ N-BK7 WINDOW		
DWG NO	15791	SHEET 1 OF 1	