

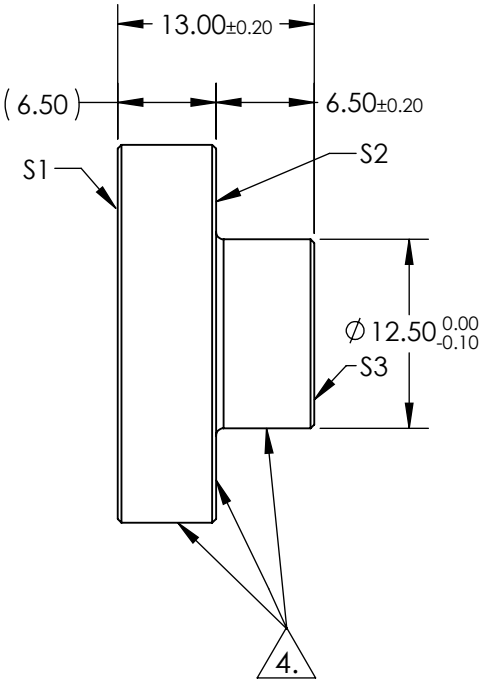
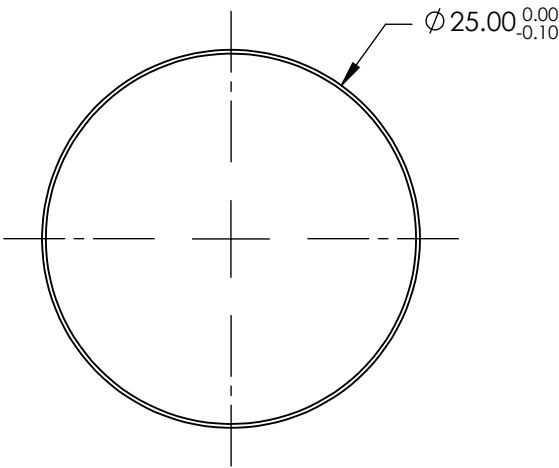
NOTES:

- 1. SUBSTRATE: Fused Silica
- 2. RoHS: COMPLIANT
- 3. COATING (APPLY ACROSS COATING APERTURE)
S1: R(ABS) > 99.80% @ 1064nm @ 0-45° AOI

DAMAGE THRESHOLD PULSED: 15 J/cm² @ 20ns, 20Hz @ 1064nm

S2 & S3: NONE

4. FINE GRIND SURFACE




**FOR INFORMATION ONLY:
DO NOT MANUFACTURE
PARTS TO THIS DRAWING**

SPECIFICATIONS SUBJECT TO CHANGE WITHOUT NOTICE
DIMENSIONS ARE FOR REFERENCE ONLY

	S1	S2	S3
SHAPE	PLANO	PLANO	PLANO
SURFACE QUALITY	10-5	FINE GRIND SURFACE	COMMERCIAL POLISH
CLEAR APERTURE	Ø 22.5	N/A	N/A
BEVEL	PROTECTIVE AS NEEDED	PROTECTIVE AS NEEDED	PROTECTIVE AS NEEDED

THIRD ANGLE PROJECTION

ALL DIMS IN mm

 **Edmund Optics®**

TITLE	STEMMED LASER MIRROR, Ø25mm, 1064nm		
DWG NO	17555	SHEET 1 OF 1	