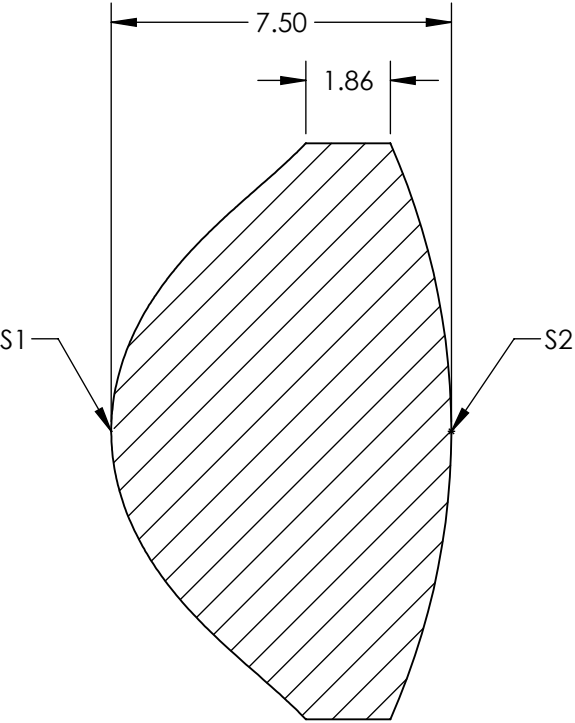
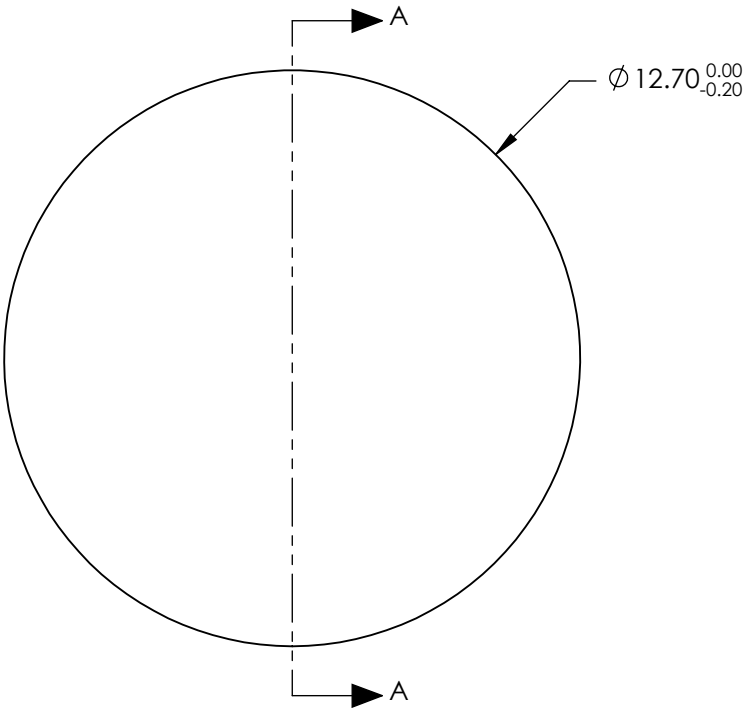


- NOTES:
- 1. SUBSTRATE:
H-K51
 - 2. COATING (APPLY ACROSS CLEAR APERTURE)

S1: NONE
S2: NONE
 - 3. CENTERING: ≤30 ARCMIN




SECTION A-A

**FOR INFORMATION ONLY:
DO NOT MANUFACTURE
PARTS TO THIS DRAWING**

SPECIFICATIONS SUBJECT TO CHANGE WITHOUT NOTICE
DIMENSIONS ARE FOR REFERENCE ONLY

	S1	S2
SHAPE	CONVEX	CONVEX
SURFACE QUALITY	80-50 (typical)	80-50 (typical)
CLEAR APERTURE	Ø 11.40	Ø 11.40
BEVEL	PROTECTED AS NEEDED	PROTECTED AS NEEDED

EFL @ 587.6nm	8
BFL @ 587.6nm	3.7
THIRD ANGLE PROJECTION	
ALL DIMS IN	mm

 Edmund Optics®			
TITLE		12.7mm Dia. x 8mm FL, Aspheric Condenser Lens	
DWG NO		19512	SHEET 1 OF 1