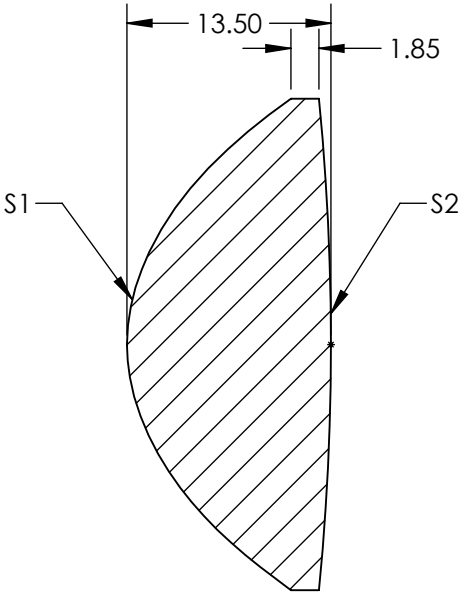
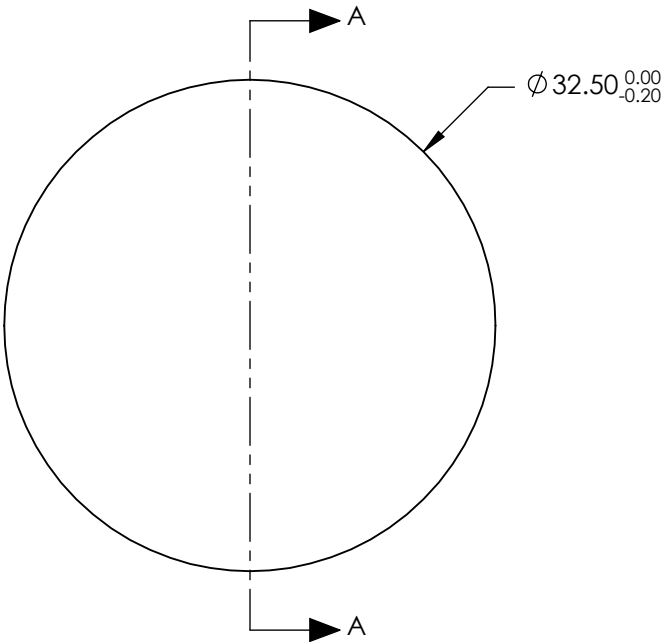



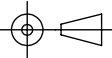
- NOTES:
- 1. SUBSTRATE:  
H-K51
  - 2. COATING (APPLY ACROSS CLEAR APERTURE)  
  
S1: NONE  
S2: NONE
  - 3. CENTERING: ≤30 ARCMIN



SECTION A-A

**FOR INFORMATION ONLY:  
DO NOT MANUFACTURE  
PARTS TO THIS DRAWING**

SPECIFICATIONS SUBJECT TO CHANGE WITHOUT NOTICE  
DIMENSIONS ARE FOR REFERENCE ONLY

|                 |                     |                     |   |      |   |   |                 |
|-----------------|---------------------|---------------------|---|------|---|---|-----------------|
|                 | S1                  | S2                  | EFL @ 587.6nm   | 23.5 |  <b>Edmund Optics®</b> |   |                 |
|                 |                     |                     | BFL @ 587.6nm   | 15   |   |   |                 |
| SHAPE           | CONVEX              | CONVEX              |  |      | TITLE   | 32.5mm Dia. x 23.5mm FL, Aspheric<br>Condenser Lens |                 |
| SURFACE QUALITY | 80-50 (typical)     | 80-50 (typical)     |   |      |   |   |                 |
| CLEAR APERTURE  | Ø 29.30             | Ø 29.30             | ALL DIMS IN   |      | DWG NO  | 19519   | SHEET<br>1 OF 1 |
| BEVEL           | PROTECTED AS NEEDED | PROTECTED AS NEEDED |   |      |   |   |                 |
|                 |                     |                     |   | mm   |   |   |                 |