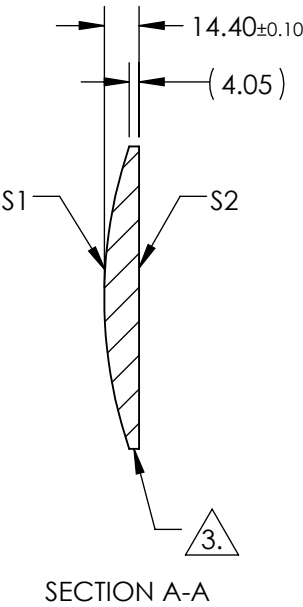
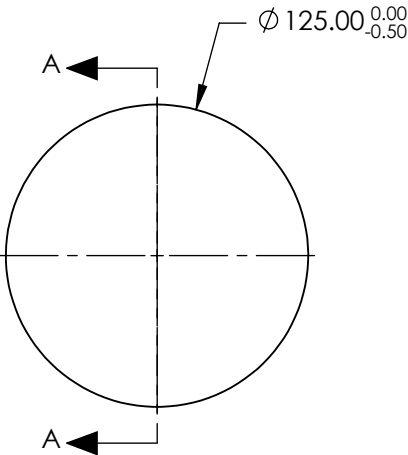
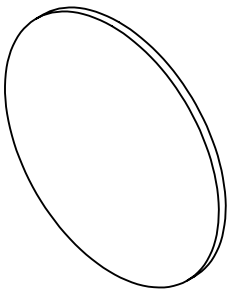




NOTES:

1. SUBSTRATE MATERIAL:  
N-BK7
2. COATING (APPLY ACROSS CLEAR APERTURE)  
  
S1 & S2: MgF2 (400-700nm)  
Ravg ≤1.75% @ 400 - 700nm
3. FINE GROUND EDGES
4. RoHS COMPLIANT



**FOR INFORMATION ONLY:  
DO NOT MANUFACTURE  
PARTS TO THIS DRAWING**

SPECIFICATIONS SUBJECT TO CHANGE WITHOUT NOTICE  
DIMENSIONS ARE FOR REFERENCE ONLY

	S1	S2	EFL	375	 Edmund Optics®		
SHAPE	CONVEX	PLANO	BFL	366			
SURFACE QUALITY	120-80	120-80			TITLE	125mm Dia x 375mm Focal Length, MgF2 Coated, PCX Condenser Lens	
RADIUS	194	∞					
CLEAR APERTURE	Ø122.00	Ø122.00					
BEVEL	PROTECTIVE AS NEEDED	PROTECTIVE AS NEEDED	ALL DIMS IN	mm	DWG NO	19909	SHEET 1 OF 1