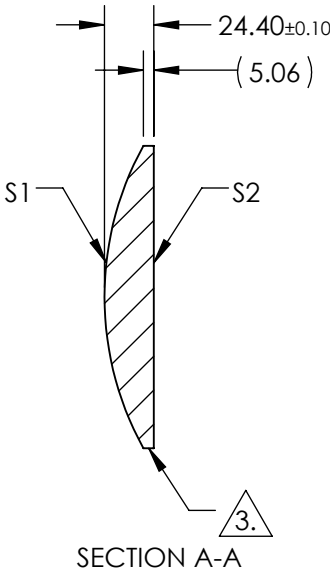
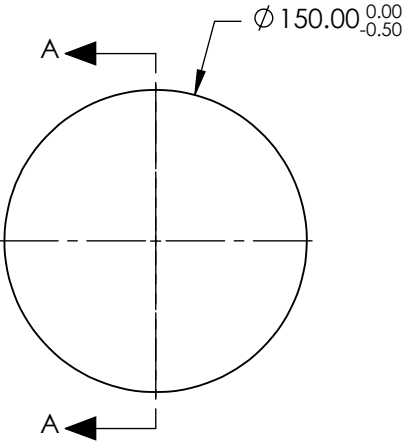
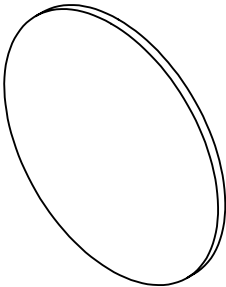


NOTES:


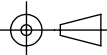
1. SUBSTRATE MATERIAL:
N-BK7
2. COATING (APPLY ACROSS CLEAR APERTURE)

S1 & S2: MgF2 (400-700nm)
Ravg ≤1.75% @ 400 - 700nm
3. FINE GROUND EDGES
4. RoHS COMPLIANT



**FOR INFORMATION ONLY:
DO NOT MANUFACTURE
PARTS TO THIS DRAWING**

SPECIFICATIONS SUBJECT TO CHANGE WITHOUT NOTICE
DIMENSIONS ARE FOR REFERENCE ONLY

	S1	S2	EFL	300	 Edmund Optics®			
SHAPE	CONVEX	PLANO	BFL	284				
SURFACE QUALITY	120-80	120-80			TITLE	150mm Dia x 300mm Focal Length, MgF2 Coated, PCX Condenser Lens		
RADIUS	155	∞						
CLEAR APERTURE	Ø146.00	Ø146.00	ALL DIMS IN		mm	DWG NO	19912	SHEET 1 OF 1
BEVEL	PROTECTIVE AS NEEDED	PROTECTIVE AS NEEDED						