

NOTES:

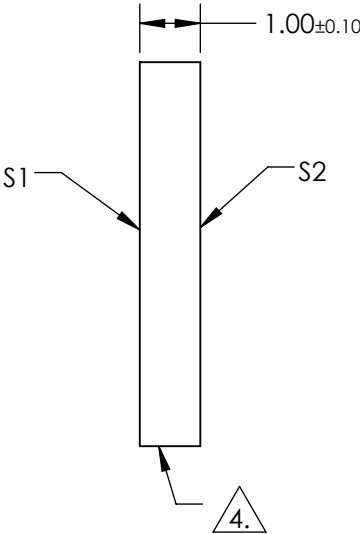
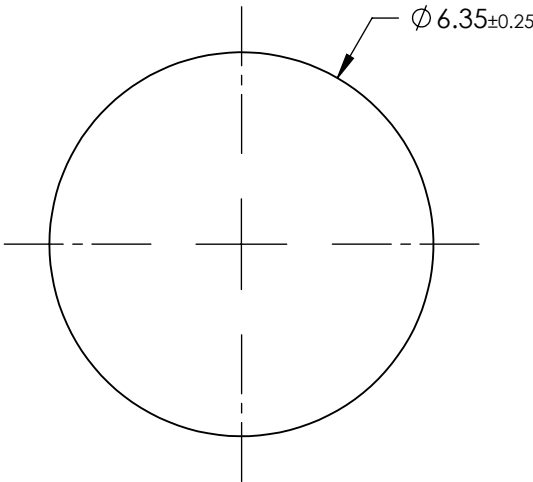
- 1. SUBSTRATE:
SAPPHIRE (AL2O3)
- 2. SURFACE S2 TO BE PARALLEL WITH SURFACE S1 TO WITHIN ≤ 3.5 ARCMIN
- 3. COATING (APPLY ACROSS CLEAR APERTURE)

S1 & S2: R(AVG) $\leq 0.25\%$ @ 880nm
R(AVG) $\leq 1.25\%$ @ 400 - 870nm
R(AVG) $\leq 1.25\%$ @ 890 - 1000nm

4. FINE GRIND SURFACE

- 5. ROHS COMPLIANT

FOR INFORMATION ONLY:
DO NOT MANUFACTURE
PARTS TO THIS DRAWING



SPECIFICATIONS SUBJECT TO CHANGE WITHOUT NOTICE
DIMENSIONS ARE FOR REFERENCE ONLY

	S1	S2
SHAPE	PLANO	PLANO
CLEAR APERTURE	Ø5.72	Ø5.72
SURFACE FLATNESS	2λ	2λ
SURFACE QUALITY	80-50	80-50
BIREFRINGENCE (n _o -n _e)	0.008	0.008
BEVEL	PROTECTIVE AS NEEDED	PROTECTIVE AS NEEDED



ALL DIMS IN mm

Edmund Optics®

6.35mm Dia., 1mm Thick, VIS-NIR AR Coated
Sapphire Window

DWG NO 20760

SHEET
1 OF 1