

NOTES:

1. SUBSTRATE MATERIAL: Fused Silica
2. SURFACE S2 TO BE PARALLEL WITH S1 TO 30 arcsec
3. COATING (APPLY ACROSS CLEAR APERTURE)

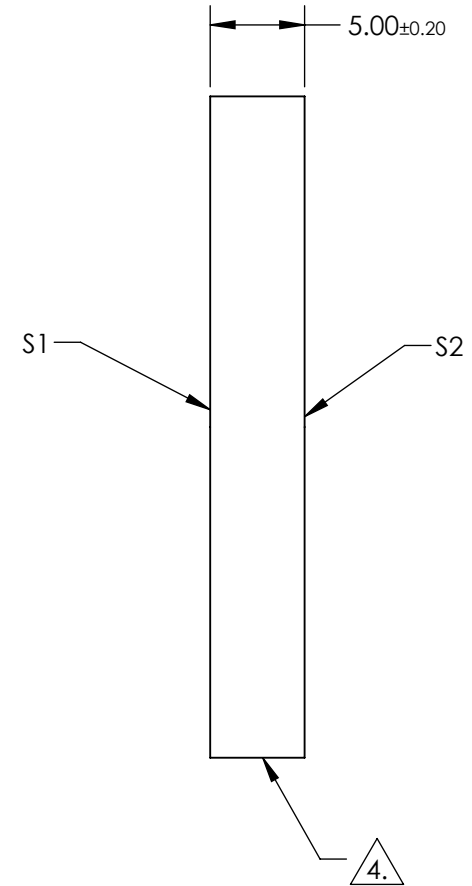
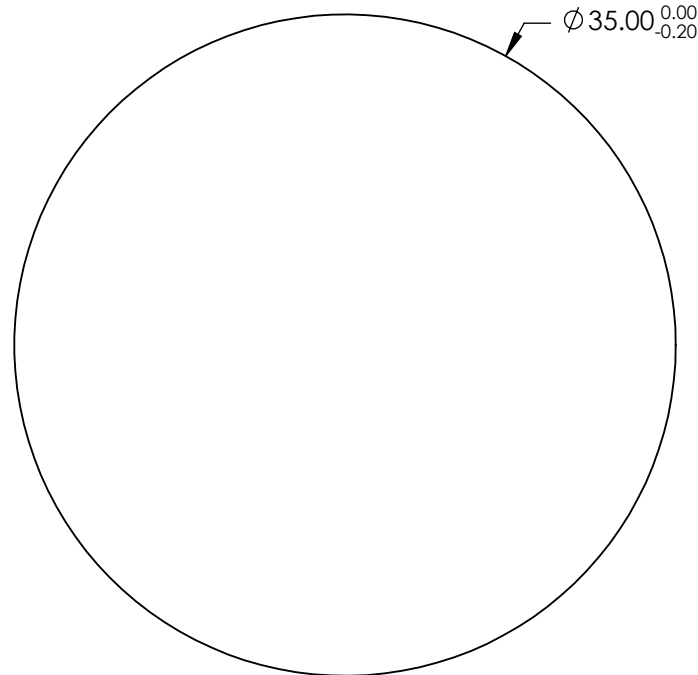
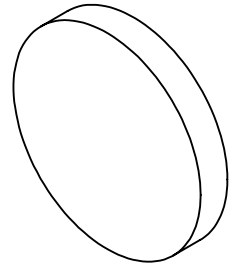
S1: SILVER WITH MULTILAYER OVERCOAT

R(avg)>99% @ 850-1150 nm, 0 deg AOI, Rs>99% @ 800-1150 nm, 45 deg AOI, Rp> 98.5 % @ ~850 – 1100 nm, 45 deg AOI

S2: NONE

4. FINE GRIND SURFACE

5. ROHS COMPLIANT



**FOR INFORMATION ONLY:
DO NOT MANUFACTURE
PARTS TO THIS DRAWING**

SPECIFICATIONS SUBJECT TO CHANGE WITHOUT NOTICE
DIMENSIONS ARE FOR REFERENCE ONLY

EO® Edmund Optics®

	S1	S2
SURFACE QUALITY	20 - 10	COMMERCIAL POLISH
SURFACE FLATNESS	$\lambda/10$	N/A
BEVEL	PROTECTED AS NEEDED	PROTECTED AS NEEDED



ALL DIMS IN mm

TITLE	DWG NO	SHEET
MIRROR 1/10 WAVE UF SILVER 800-1150NM 35mm DIA	22018	16 OF 20