

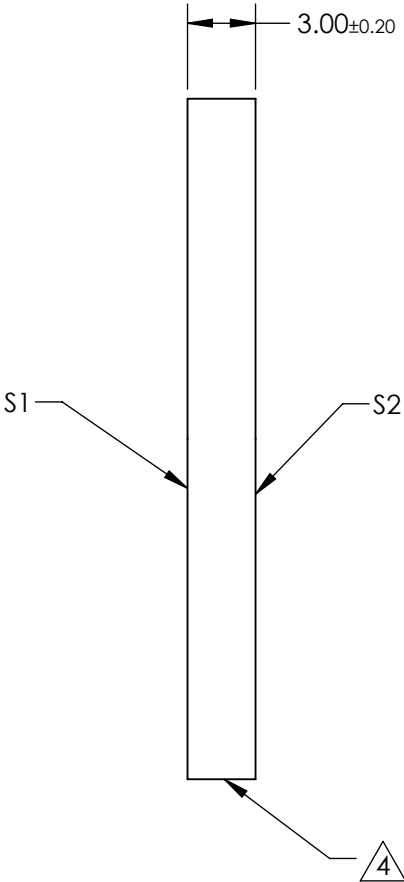
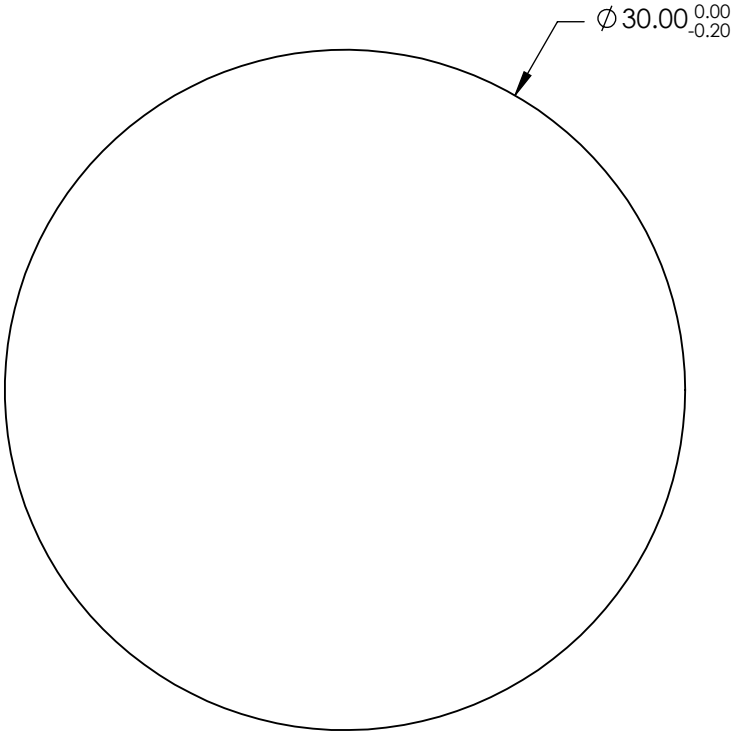
NOTES:

- 1. SUBSTRATE:  
FUSED SILICA
- 2. SURFACE S2 TO BE PARALLEL WITH S1 TO 30 ARCSEC
- 3. COATING (APPLY ACROSS CLEAR APERTURE)

S1:Ravg >89% @ 250 - 450nm  
Ravg >85% @ 250 - 700nm  
S2:NONE

4. FINE GRIND SURFACE

5. ROHS COMPLIANT



**FOR INFORMATION ONLY:  
DO NOT MANUFACTURE  
PARTS TO THIS DRAWING**

SPECIFICATIONS SUBJECT TO CHANGE WITHOUT NOTICE  
DIMENSIONS ARE FOR REFERENCE ONLY

**Edmund Optics®**

|                  | S1                          | S2                  | THIRD ANGLE PROJECTION |    | TITLE  | 30mm Diameter, 3mm Thick, Diameter UV Enhanced Aluminum Coated, λ/10 Mirror |                |
|------------------|-----------------------------|---------------------|------------------------|----|--------|---|----------------|
| SURFACE QUALITY  | 20-10                       | COMMERCIAL POLISH   | ALL DIMS IN            | mm | DWG NO | 26380   | SHEET 26 OF 28 |
| SURFACE FLATNESS | λ/10 (Measured Pre-Coating) | N/A                 |                        |    |        |   |                |
| BEVEL            | PROTECTED AS NEEDED         | PROTECTED AS NEEDED |                        |    |        |   |                |