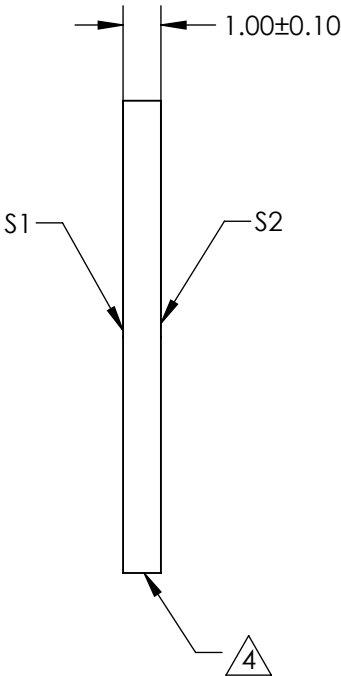
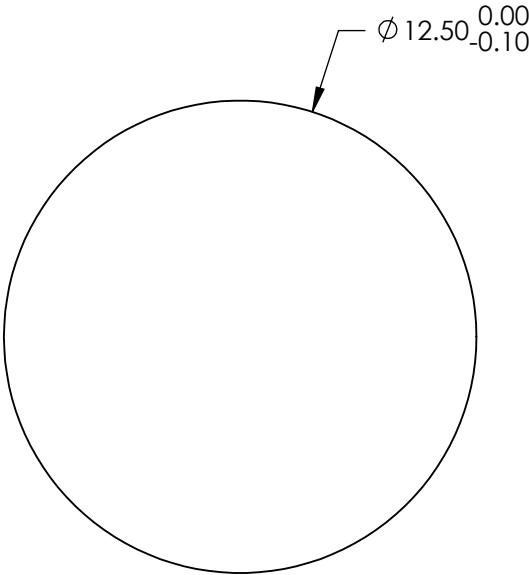
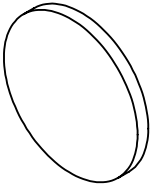


NOTES:

- 1. SUBSTRATE:  
FUSED SILICA (CORNING 7980)
- 2. S1 TO BE PARALLEL WITH S2 TO WITHIN <1 ARCMIN
- 3. COATING (APPLY ACROSS CLEAR APERTURE)  
S1 & S2: UV-VIS (250-700nm)  
R(ABS) ≤1.0% @ 350 - 450nm  
R(AVG) ≤1.5% @ 250 - 700nm

4. FINE GRIND SURFACE

- 5. ROHS COMPLIANT



**FOR INFORMATION ONLY:  
DO NOT MANUFACTURE  
PARTS TO THIS DRAWING**

SPECIFICATIONS SUBJECT TO CHANGE WITHOUT NOTICE  
DIMENSIONS ARE FOR REFERENCE ONLY

	S1	S2
SHAPE	PLANO	PLANO
SURFACE QUALITY	40 - 20	40 - 20
CLEAR APERTURE	Ø 11.25	Ø 11.25
BEVEL	PROTECTED AS NEEDED	PROTECTED AS NEEDED



ALL DIMS IN mm

**Edmund Optics®**

TITLE

12.5mm Dia., 1mm Thick, UV-VIS Coated, λ/4  
Fused Silica Window

DWG NO

72342

SHEET  
8 OF 84