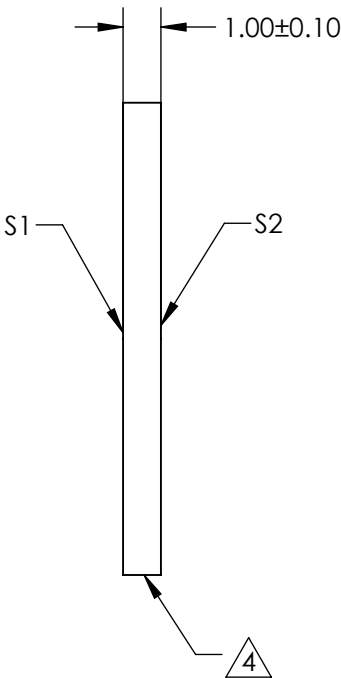
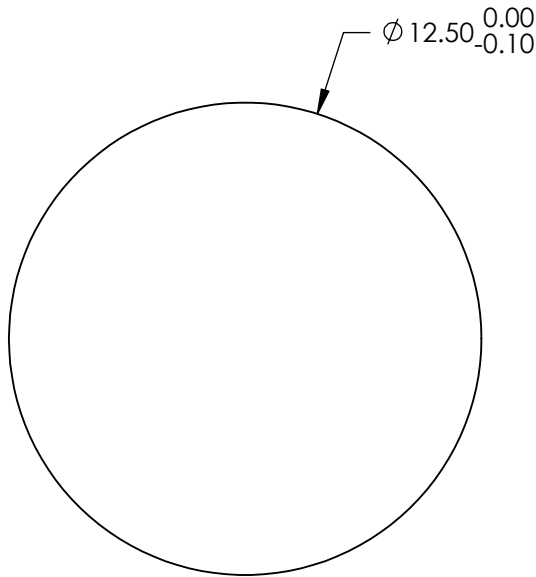


- NOTES:
- 1. SUBSTRATE:
FUSED SILICA (CORNING 7980)
 - 2. S1 TO BE PARALLEL WITH S2 TO WITHIN <1 ARCMIN
 - 3. COATING (APPLY ACROSS CLEAR APERTURE)
S1 & S2: VIS 0° (425-675nm)
R(AVG) ≤0.4% @ 425 - 675nm

4. FINE GRIND SURFACE

5. ROHS COMPLIANT

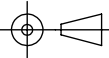


FOR INFORMATION ONLY:
DO NOT MANUFACTURE
PARTS TO THIS DRAWING

SPECIFICATIONS SUBJECT TO CHANGE WITHOUT NOTICE
DIMENSIONS ARE FOR REFERENCE ONLY

	S1	S2
SHAPE	PLANO	PLANO
SURFACE QUALITY	40 - 20	40 - 20
CLEAR APERTURE	Ø 11.25	Ø 11.25
BEVEL	PROTECTED AS NEEDED	PROTECTED AS NEEDED

THIRD ANGLE
PROJECTION



ALL DIMS IN

mm



Edmund Optics®

TITLE

12.5mm Dia., 1mm Thick, VIS 0° Coated, λ/4
Fused Silica Window

DWG NO

72343

SHEET
9 OF 84